

SURVIVING GUIDE TO THE EXCHANGE STUDENT IN

CEFET-MG



+55 31 3319-7074 / +55 31 3319-7471

sri@cefetmg.br

SRI | Secretaria de
Relações Internacionais


CEFET-MG
CENTRO FEDERAL DE
EDUCAÇÃO TECNOLÓGICA
DE MINAS GERAIS



General Director

Carla Simone Chamon

Vice-Director

Conrado de Souza Rodrigues

Chief of Staff

Danielle Marra de Freitas Silva Azevedo

International Officer

Conrado de Souza Rodrigues

I. GENERAL INFORMATION

1. Obtaining a Visa	Pg. 4
2. Airport	Pg. 4
3. Nic Form	Pg. 5
4. Healthcare	Pg. 5
5. CPF	Pg. 6
6. Registering With The Federal Police	Pg. 7
7. Dining Service/Restaurant In CEFET-MG	Pg. 9
8. Money	Pg. 9
9. Safety	Pg. 10
10. Cell Phones	Pg. 11
11. Getting Around	Pg. 11
12. Climate	Pg. 14

II. CEFET-MG CAMPI CITIES

1. Araxá	Pg. 15
2. Belo Horizonte	Pg. 18
3. Contagem	Pg. 29
4. Curvelo	Pg. 33
5. Divinópolis	Pg. 37
6. Leopoldina	Pg. 41
7. Nepomuceno	Pg. 46
8. Timóteo	Pg. 48
9. Varginha	Pg. 51

I. GENERAL INFORMATION

1. OBTAINING A VISA

ONLY IF YOU NEED!

Applying for a visa should happen at least 3 weeks before you are scheduled to leave for Brazil, preferably more. The process varies by country, and is carried out through the closest Brazilian consulate or embassy in your home country. Make sure that you keep the original visa application form that you submit – you need this to register your stay once in Brazil.

2. AIRPORT

Tancredo Neves/Confins International Airport is Belo Horizonte's main airport. Be prepared to spend some time at baggage claim and customs if arriving from overseas. The city is 45 minutes to an hour's drive away, and you can take the Conexão Aeroporto bus, choose the one that goes to the terminal Álvares Cabral. Tickets can be purchased at the counter at the airport, do not need to be booked in advance, and cost around R\$42.60 one way.

You can access this link to take a look at the route:

https://maps.app.goo.gl/1c6y1zJvRDFip8cb8?g_st=ac



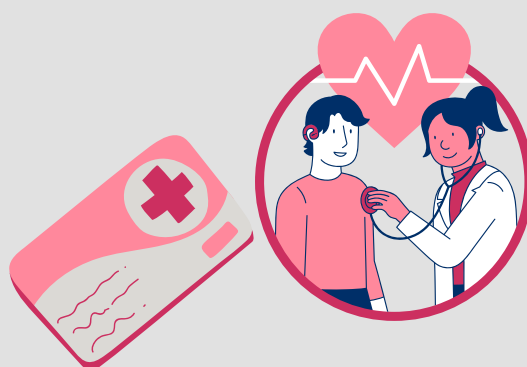
3. NIC FORM

If you have not yet submitted the NIC form requested by the International Relations Office, please fill out this document, as this information is essential for granting internet access, completing enrollment, and issuing the student ID card.

4. HEALTHCARE

In Brazil, healthcare options include private hospitals, where costs vary depending on the type of procedure required, and can be quite expensive depending on the situation. However, if you have health insurance, you may not need to worry about these costs when seeking care at a private hospital, though it is advisable to check with your insurance provider to confirm coverage.

Besides private hospitals, there is the Unified Health System (SUS), one of the largest public healthcare systems in the world. SUS provides services ranging from basic care to complex treatments, and it is entirely free, available to anyone in need.



5. CPF

In Brazil, every person has a registration number called CPF (Cadastro de Pessoa Física), and if you are staying for more than three months, you will need one. We advise you to obtain it while in your country so that when you arrive, you can speed up the enrollment process.

The process to arrange it is simple. First, you need to locate the nearest Brazilian Consulate. There, you can request information about the procedures. Here is a website where you can find information about the nearest consular post—just insert your home country: <https://econsular.itamaraty.gov.br/>.

Next, you have to fill out a registration form at this link: <https://servicos.receita.fazenda.gov.br/Servicos/CPF/cpfEstrangeiro/Fcpf.asp>. On the first page, you need to select your country under “Selecione o País.” On the second page, fill in all the required information based on the print screen below:

Motivo Preenchimento	
<input checked="" type="radio"/> Inscrição	<input type="radio"/> Alteração
<input type="radio"/> Cancelamento	<input type="radio"/> Regularização
Nome completo (Sem abreviações)	CPF (Exceto Inscrição)
Full Name (without abbreviations)	Not necessary
Sexo	Data Nascimento (DD/MM/AAAA)
Masculino <input type="radio"/> Feminino <input type="radio"/> Select your gender	Date of birth Day/Month/Year
Nome da mãe (Sem abreviações)	
Mother's full name (without abbreviations)	
Logradouro	Número
Your street	Your house number →
	Complemento Apt number if needed
Cidade	Nacionalidade
Your city	Select your nationality → Seleccione o País
Título Eleitoral	Telefone
Not necessary	Phone number
Email	Data de saída do país (DD/MM/AAAA)
Your e-mail address	Not necessary
Enviar	← Click here to send

When visiting the consulate for the first time, bring the original and a copy of your ID, which should include your nationality, parents' names, place of birth, and date of birth, as well as the printed registration form (FCPF - Ficha Cadastral de Pessoa Física) or service code.

At the consulate, you will present your printed registration form (FCPF) and the CEFET-MG admission letter to receive your definitive CPF. Once you have it in hand, send two images of the front and back of the document in PDF format to the CEFET-MG International Affairs Office via email at sri@cefetmg.br.

6. REGISTERING WITH THE FEDERAL POLICE

If you entered on a visa and/or are staying for more than 90 days (i.e. you), then you have 30 days after you enter Brazil to register your stay with the Federal Police. You will face hefty fines if you forget to do this. It is a lengthy, but relatively straightforward process. You will need:

- Your passport, with Brazilian visa and entry stamp.
- Notarised copies of the relevant pages in your passport: main information page (with your name and passport number), Brazilian visa, entry stamp from when you arrived in Brazil. Getting copies notarised is easy and can be done at a “Cartório” in town. There is one near the corner of Rua Sao Paulo and Avenida Amazonas.
Make sure to bring your original passport when you go.
- Your original visa application form.
- Two recent, colour, 3x4cm photos of yourself (two copies of the same picture). You should be facing front on and not smiling, with your head taking up most of the frame, just as for a passport photo.
- The payment receipts from the fees
- The form obtained from registering online

When you are registering on the Federal Police Website: www.dpf.gov.br, make sure you have your host family, friends or even the SRI's team to help you out. Having a person who speaks portuguese will make it easier.

7. DINING SERVICE/RESTAURANT IN CEFET-MG

The Student card will provide you access to a meal plan. Thanks to CEFET Feeding Programme (Programa de Alimentação Escolar), each single meal has a low cost which you will pay by charging your Identity/Access card. Lunch and dinner are offered from Monday to Friday, having a whole range of meals and one vegetarian option as well for each day. You can check everyday meals by visiting the Diretoria de Desenvolvimento Estudantil website, but that is a page in portuguese: <https://www.dde.cefetmg.br/apresentacao-dos-restaurantes/cardapios/>

8. MONEY

How you wish to arrange money will depend on your length of stay and your home bank's policies with regard to transfer fees. Most places will accept Mastercard and Visa, including the ATMs that are located inside banks (not on the street). You cannot open a bank account until you have received your "Protocolo" (see "Registering with the Federal Police") or "CPF" (see "CPF").

9. SAFETY

Everywhere you go in the world, you must prioritize your safety above all else. Belo Horizonte is relatively safe, but robberies can occur, as in any big city, so you should always use common sense. Try not to carry large amounts of money. Divide your money among different places (in your wallet, a money belt, your bag, or at home) so that, if you are robbed, you will still have some funds available. If you rely solely on a credit or debit card for withdrawing money while in Brazil, consider leaving the card at home and carrying only the cash you need for the day or night.

If you go out drinking, ensure you have a way to get home safely before the night ends. Avoid being drunk and alone in the city late at night.

Small cities, like Curvelo, Leopoldina, or Timóteo, can be safer. However, even in small cities, you must remain vigilant and take precautions to avoid danger. While these places may feel safer due to their quieter atmosphere, risks still exist. Be mindful of your surroundings, avoid poorly lit or deserted areas at night, and stay aware of your belongings. Always inform someone you trust about your plans, and if possible, travel with a companion. Safety is paramount no matter where you are, so always exercise caution and good judgment.

10. CELL PHONES

Purchasing a sim card and top-ups is simple, but you will need a Brazilian social security number, the CPF, to activate the sim card, if you are staying more than three months you can make one following the instructions on “CPF”. If you will stay less time you can ask your host or a friend to help you with this.

There are four major providers: Claro, Oi, Tim, and Vivo. The main thing to consider when deciding on a company is that it is much cheaper to call and message those on the same network. Ask your host, friends, and co-workers which provider they use, as they will be the people you'll call often.

11. GETTING AROUND

● Buses

- Buses follow a route usually indicated by a number, and sometimes a letter;
- Google Maps and Moovit can be useful tool for determining which bus you need to take;
- If you see your bus, you have to hold out your arm in order to let them know you need to enter it;

- When you see you're approaching your bus stop, make sure to press the button to signal or pull the string above the holding place;
- Most routes are serviced frequently, but it depends on the city;
- The numbers of buses reduces late at night and on Sundays;
- Inner-city buses cost vary from city to city. You can either pay with cash, by paying the driver or, in some cities, purchase a rechargeable card from some shops (like Belo Horizonte, that you can know more on the website or app called BHBUS).

● **Taxis**

Costs of taxis are more or less in line with international cities. It's good to know how to tell your driver where you would like to go in Portuguese or at least have it written in your cell phone or a paper. Some taxis accept credit cards, but not most – ask first.

● **Transportation Apps**

You can also use transportation apps, especially at night, as they are safer. We recommend checking the driver's rating; the closer it is to 5 stars, the better. Additionally, always verify the driver's name and the car's plate before getting in.

There are many transportation apps in Brazil. The most famous one is *Uber*, but you can also search for others, such as the *99* app, always exercising caution. In smaller cities, alternative apps often replace Uber, so it is advisable to ask locals for information about which transportation apps they use.

● **Walking**

That's a great way to know the cities. Most of them are pedestrian friendly. But, unlike in other countries, when the green man light changes to red, you have 2 or 3 seconds maximum before the cars start moving. Even if you have a green light, look both ways for the cars or bikes that occasionally ignore the lights.

12. CLIMATE

Brazil has a wide variety of climates that vary by region. In Minas Gerais, the predominant climate is tropical, characterized by dry winters from June to September and rainy summers from December to March. Generally, warm weather prevails, making it advisable to pack lightweight clothing suitable for higher temperatures.

However, it is important to consider the specific area of the state you plan to visit. In southern Minas Gerais, due to higher altitudes, the climate is milder, with cooler temperatures, especially during winter from June to August. In these regions, nights and early mornings can be quite cold, making warm clothing and jackets essential. Conversely, in the northern part of the state, the climate tends to be hotter and drier year-round, with consistently high temperatures and less thermal variation. For these areas, lightweight and comfortable clothing is more appropriate.

It is also worth noting that temperatures can vary significantly between day and night, especially in mountainous regions. Therefore, packing mid-season clothes, such as light jackets, can be practical. To better prepare for your trip, check the weather forecast and adjust your luggage according to the expected conditions of your destination and travel period.

II. CEFET-MG CAMPI CITIES

1. ARAXÁ

Araxá is a small city located in the interior of Minas Gerais, approximately five hours away from Belo Horizonte. With a population of 111,691, it is also home to the fourth campus of CEFET-MG.

CEFET-MG - Campus Araxá

Website: <https://www.araxa.cefetmg.br/>

E-mail: diretoria.araxa@cefetmg.br

Instagram: @cefet_araxa

Phone number: +55 (34) 3669-4500

Address: Av. Ministro Olavo Drummond, 25 - Amazonas, Araxá - MG

Things To See And Do

● Fonte Dona Beja:

The natural fountain is located among volcanic rocks and is named after one of the city's most renowned historical figures. According to local accounts, the spring is situated in the very spot where Dona Beja used to bathe, with her beauty and youthful appearance attributed to the qualities of this water.

Due to its unique geological formations, the fountain is rich in minerals, offering not only a rejuvenating experience but also the opportunity to appreciate the area's natural beauty and the relaxing sounds of flowing water.



● **Museu Histórico de Araxá - Dona Beja:**

In 1965, a mansion in the city of Araxá was transformed into the Dona Beja Regional Museum. Featuring an impressive collection, the museum showcases the history of Araxá through period artifacts, including furniture, altars, clothing, ceramics, and works of art.



● **Teatro Municipal Maximiliano Rocha:**

In 2012, the municipal theater was inaugurated, featuring a stunning design, excellent acoustics, and a beautiful fountain above the structure. It serves as a venue for a variety of events, ranging from classical to popular performances, including musicals, theatrical productions, children's shows, official ceremonies, literary gatherings, academic conferences, and civic events. In 2021, the theater was renamed "Maximiliano Rocha Municipal Theater" in honor of the renowned artist from Araxá.



2. BELO HORIZONTE

Belo Horizonte, commonly referred to as BH, is the capital of the state of Minas Gerais and has a population of 2.316 million people. It is also part of a vast metropolitan area with over 6 million inhabitants when combined. BH hosts three campi of CEFET-MG, including the institution's first campus, which has served as its central headquarters ever since.

CEFET-MG - Campus Nova Suíça

Website: <https://www.ns.cefetmg.br/>

E-mail: dc-ns@cefetmg.br

Instagram: @diretorians

Phone number: +55 (31) 3319-7130 - +55 (31) 3319-7131

Address: Av. Amazonas, 5253 - Nova Suíça - Belo Horizonte - MG

CEFET-MG - Campus Nova Gameleira

Website: <https://www.ng.cefetmg.br/>

E-mail: dc-ng@cefetmg.br

Instagram: @cefetmg_novagameleira

Phone number: +55 (31) 3319-6722 / +55 (31) 3319-6724

Address: Av. Amazonas, 7675 - Nova Gameleira - Belo Horizonte - MG

CEFET-MG - Campus Gameleira

Website: <https://www.ng.cefetmg.br/>

E-mail: dc-ng@cefetmg.br

Instagram: @cefetmg_novagameleira

Phone number: +55 (31) 3319-6722 / +55 (31) 3319-6724

Address: Av. Amazonas, 7675 - Nova Gameleira - Belo Horizonte - MG

THINGS TO SEE AND DO - Belo Horizonte

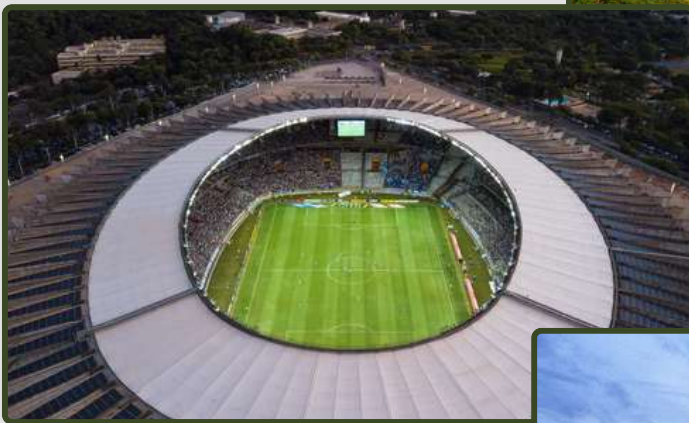
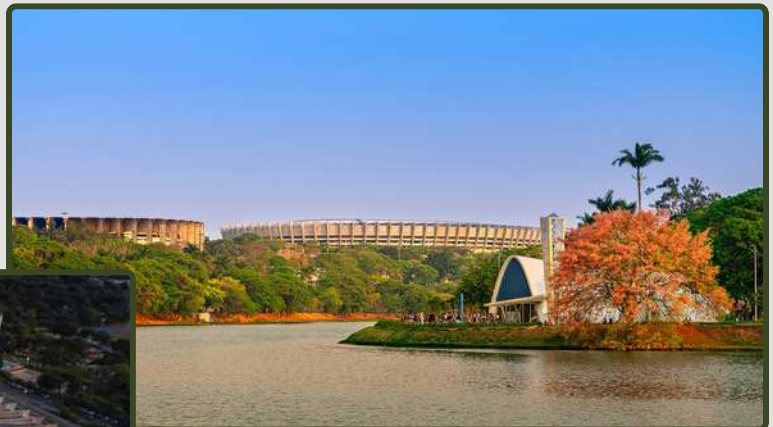
● Mercado Central:

Mercado Central is a must-see. This large indoor market sells everything, specially brazilian traditional foods and drinks, cheeses and even handcraft made by locals.



● Lagoa da Pampulha:

This large artificial lake is home to many art museums and famous buildings. The Zoo and football stadiums, such as Mineirão e Mineirinho, are also nearby. There's an amusement park close to the Igreja de São Francisco de Assis. With an 18km circumference of flat, uninterrupted pavement, Lake Pampulha is also a popular place to run or spend the afternoon with friends and family. Around Lake Pampulha you can also find a lot of bars, which will serve brazilian food and drinks like caipirinha, torresmo, açaí and a lot more.



● **Parque Guanabara:**

Guanabara offers more than 30 unique and fun attractions. These are toys for the whole family! For the more radical, we have the Sky Fall tower, the Cataclysm and much more. To date? Nothing beats a ride on the Mirage, the largest gondola ferris wheel produced in Brazil. And to cheer up the whole group, a good tip is a little run on the Autopista.



● Feira Hippie:

The hippie fair is an invitation to coexistence, exchange and cultural encounters in public space, in addition to being a large shopping center for exclusive and artisanal products. The fair has dried flowers and decorative arrangements, housewares, rustic furniture, baskets, rugs and curtains. It has shoes, bags, jewelry, adult and children's clothing, baby layette, toys and stuffed animals. It has percussion musical instruments, paintings, sculptures and much more. Did you feel hungry or thirsty? The fair has a lot of delicious food, juices, soft drinks and beers. The Belo Horizonte Hippie Fair runs on Sundays, every Sunday of the year, from 7am to 2pm.



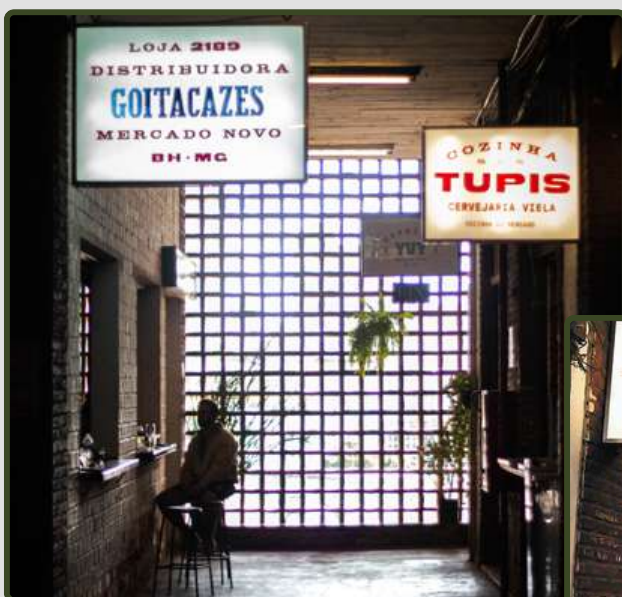
● Savassi:

Savassi is the area of town with the most restaurants, bars, and shopping. The nearby Praça Liberdade is home to many museums and interesting architecture. You can check the programation of one of them in <https://ccbb.com.br/belo-horizonte/bh-programacao/>. It is also a short walk from here to the Municipal Park.



● Mercado Novo:

Mercado Novo is an authentic space. No one would have imagined that the building designed in 1960 to be Belo Horizonte's new municipal market would become a multicultural space, which combines gastronomy, culture, music, fashion and urbanism, to welcome thousands of visitors from the most varied "tribes". From people who just want to enjoy music and meet friends to those who are looking for a nightlife experience in the city. It is a space that celebrates the city's urban life without losing sight of the traditional. With bars and restaurants that offer a modern approach to typical food and snacks, Mercado Novo has been gaining a place in the city's alternative scene.



● Sapucaí:

Rua Sapucaí in the capital is in the Floresta neighborhood, in the eastern region of BH, and has become a symbol of diversity in the last decade, with the opening of several bars and restaurants, for all styles. Close to the Central Metro Station, the street can also be accessed by a staircase that leads very close to the busiest spots. There are bars, restaurants and even a concert hall. The busiest days in Sapucaí are Friday night, Saturday throughout the day, with busy nights, and late Sunday afternoons. More information at: <https://bhaz.com.br/guia-bhaz/rua-sapucaai-bh/>.



● **Parque Municipal Américo Renné Giannetti:**

Located in the central region of Belo Horizonte, and opened on September 26, 1897, it is the oldest environmental heritage in Belo Horizonte, designed at the end of the 19th century by the construction committee in charge of planning the new capital of Minas Gerais. It has an area of 182 thousand square meters of extensive vegetation. It houses the Francisco Nunes Theater, Orquidário, a small amusement park and the back part of the Palácio das Artes. The park today forms a representative ecosystem with centuries-old trees and a wide diversity of species. It has several springs that supply three lagoons and around 280 species of exotic and native trees, such as: fig trees, jackfruit trees, bald cypress, flamboyant, eucalyptus, sapucaia, mulatto and kingwood. The space is also home to more than 100 species of birds, including bem-te-vis, thrushes, herons, parakeets, woodpeckers, tanagers, tanagers and other animals, such as possums and tamarins. It is a true refuge for wildlife.



● **Mirante e Parque das Mangabeiras:**

Observing Belo Horizonte from above and how it relates to the nature around it is one of the proposals of Mirante do Mangabeiras. The place is one of the highest points in the capital with approximately 1,170 meters of altitude. But it's not just the fact that it offers a privileged view that makes it one of the city's postcards and one of the most popular places to admire the sunset. After several revitalizations and improvements over the last decade, the Mirante do Mangabeiras also attracts visitors' attention to itself due to its scenographic beauty enriched by the site's planned landscaping project, which offers comfort without stealing the protagonism of the “beautiful horizon” to be seen. to lose sight of that delights landscape lovers. An environmental preservation area with approximately 35 thousand m², Mirante do Mangabeiras was incorporated into Parque das Mangabeiras Maurício Campos, which is responsible for its administration. The place has two wooden decks, each measuring around 125 m², providing space for activities such as picnics, yoga, relaxation and even playing with children.



● Nearby Belo Horizonte:

Many small colonial towns are within a couple of hours' drive. Ouro Preto is a beautiful mining town that (along with nearby Mariana) is host to the annual winter arts festival, Festival de Inverno, in late July. The region of Serra do Cipó has many spectacular waterfalls, including the state's tallest near Tabuleiro.

You can also check Santuário do Caraça which is full of adventures for its visitors, with trails to various locations, from waterfalls to caves and peaks



Ouro Preto / MG



Cachoeira Vêu da Noiva



Santuário e Serra do Caraça



3. Contagem

Contagem is the third most populous city in Minas Gerais, with over 621,000 residents. Located in the metropolitan region of Belo Horizonte, it offers convenient and quick transportation between the two cities, whether by transportation apps, buses or metro. In addition, the city hosts the eleventh campus of CEFET-MG.

CEFET-MG - Campus Contagem

Website: <https://www.contagem.cefetmg.br/>

E-mail: dc-cn@cefetmg.br

Instagram: @cefetmg_contagem

Phone number: +55 (31) 3368-4300 / +55 (31) 3368-4302

Address: Alameda das Perdizes, 61 - Bairro Cabral - Contagem/MG

Things To See And Do

● Parque Sarandi:

Sarandi Park is a permanent preservation area located along the banks of the Sarandi stream. The park offers a variety of recreational, sports, and nature-related activities, making it a versatile space for visitors of all ages. Its facilities include fitness bars, multi-sports courts for futsal, shuttlecock (peteca), volleyball, and

basketball, as well as a sand soccer field, a walking track, and equipped locker rooms.

As the largest park in the city, Sarandi Park serves as a prominent recreational hub, conveniently located near Contagem Shopping Mall. Open to the public every day free of charge, it provides an inviting space for relaxation, exercise, and quality time with friends and family. Whether you're looking for a peaceful walk, an engaging sports match, or simply a moment to unwind in a natural setting, Sarandi Park is an excellent choice for leisure and enjoyment.



● **Praça Nossa Senhora da Glória:**

Nossa Senhora da Glória Square, located in the heart of Contagem, is a wonderful spot for walking and enjoying expansive green spaces.

One of the square's most striking features is its beautiful waterfall, which adds to the charm and tranquility of the space. During the Christmas season, the square transforms into a festive destination, adorned with thematic decorations and illuminated by dazzling holiday lights, creating a good experience for visitors.

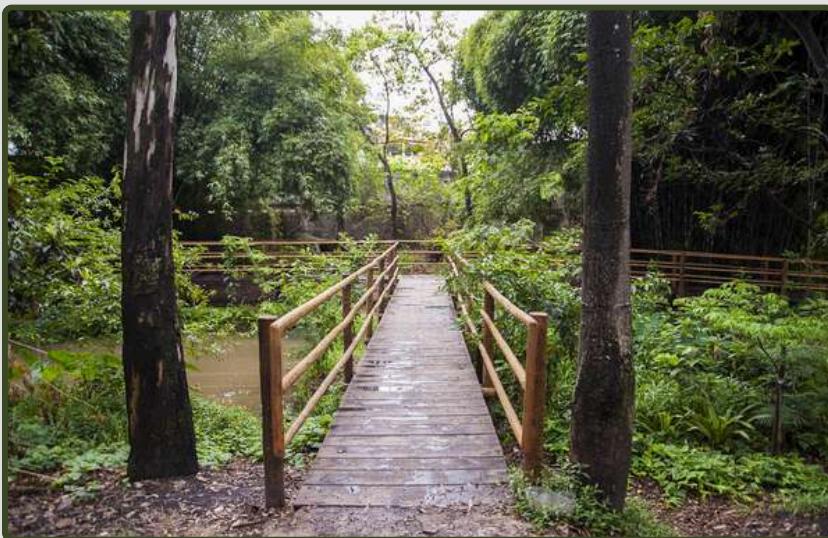
Nossa Senhora da Glória Square is ideal for relaxed outings, whether with friends, family, or on your own. Its inviting ambiance makes it a favorite spot for leisure and casual gatherings throughout the year.



● **Parque Ecológico Thiago Rodrigues Ricardo:**

The Thiago Rodrigues Ricardo Ecological Park, commonly known by locals as the Eldorado Ecological Park, is located near the Eldorado neighborhood and Big Shopping. It offers opportunities to connect with nature, as well as facilities for cultural, educational, and sports activities, including sports courts, a public gym, and a playground.

The park is also home to several springs, Brazilian fauna and flora, and small, accessible trails suitable for all visitors. It is an excellent spot for picnics and leisurely outings. The ecological park is open daily from 8:00 AM to 5:00 PM, except on Mondays.



4. Curvelo

Curvelo is a small city in the central region of Minas Gerais, with a population of over 80,000. It is typically known for religious tourism and a few major annual events. Additionally, the city is home to the tenth campus of CEFET-MG.

CEFET-MG - Campus Curvelo

Website: <https://www.curvelo.cefetmg.br/>

E-mail: dc-cv@cefetmg.br

Instagram: @cefetmg_curvelo

Phone number: +55 (38) 3729-3900

Address: Rua Raymundo Mattoso, 900 - Santa Rita - Curvelo - MG

Things To See And Do

● Churches:

Curvelo boasts a wide variety of Catholic churches with stunning architecture, each holding its own historical, religious, and cultural significance. Even tourists who do not follow Catholicism are often drawn to visit these churches to admire the artistry they embody.

These churches occasionally host events in the city, featuring traditional foods and theatrical performances, among other attractions. Some of the most notable ones include:

- Basilica of São Geraldo: Inaugurated in 1918 by Dutch missionaries, it is the only basilica in the world dedicated exclusively to Saint Gerald. It is located in front of a plaza that serves as the venue for some of the aforementioned events.
- Matriz of Santo Antônio: Consecrated in 1877, it is renowned for its altar, intricately carved by the master artisan Chico Entalhador. In front of the church, there is a square featuring a charming gazebo and a beautiful garden.



Basilica of São Geraldo



Matriz of Santo Antônio



● Squares:

In small towns like Curvelo, town squares often serve as popular meeting places and venues for local events. Curvelo features two main squares located in the city center, just a few minutes' walk apart.

Benedito Valadares Square, the smaller of the two, is charming and features a fountain that plays music on weekends, as well as a stage surrounded by two monuments. The other square, Praça da Estação, is named after its historical use as a train station. Nowadays, this large square hosts the city's main events, offers various activities sporadically, and is a popular spot for families to enjoy weekend outings.



Praça Benedito Valadares

Praça da Estação



● **Forró de Curvelo:**

Curvelo's largest event is the "Forró de Curvelo," which attracts thousands of people from across the state of Minas Gerais. Held at Praça da Estação, the festival occurs in July every year and lasts for more than a week, although the exact duration varies each year.

The event is completely free and features numerous performances by artists, often associated with Brazilian country music (sertanejo). Additionally, many local residents, alongside institutions and businesses, set up decorated stalls selling traditional foods throughout the festival.



5. Divinópolis

Divinópolis is a city in the metropolitan region of Minas Gerais capital, located about two hours away. With a population of over 200,000 residents, the city is home to the fifth campus of CEFET-MG.

CEFET-MG - Campus Divinópolis

Website: <https://www.divinopolis.cefetmg.br/>

E-mail: dc-dv@cefetmg.br

Instagram: @cefetdiv

Phone number: +55 (37) 3229-1180

Address: Rua Álvares de Azevedo, 400 - Bela Vista - Divinópolis - MG

Things To See And Do

● Museu Geraldo Teles de Oliveira (Museu GTO):

Located in the city of Divinópolis, in the Centro-Oeste region of Minas Gerais, the Geraldo Teles de Oliveira Museum, or GTO Museum, is a cultural gem that pays tribute to one of Brazil's prominent artists. Established in 1981, the museum is housed in the former residence of Geraldo Teles de Oliveira, where he lived

with his family until his passing in 1990.

The museum offers visitors an intimate glimpse into G.T.O.'s life and work, featuring a small collection of his art, personal belongings, and the tools he used in his creative process. In addition, the space hosts the ateliers of Mário Teles, Geraldo Fernandes, and Milton Marcolino, who continue the artistic legacy passed down through generations.

Conveniently located just 5 minutes from the Cathedral do Divino Espírito Santo, the GTO Museum welcomes visitors daily from 8:00 AM to 6:00 PM, including weekends and holidays. Admission is free, making it an accessible and enriching destination for art and history enthusiasts.



● Teatro Municipal Usina Gravatá:

Housed in a historic building constructed in 1932 to serve as an alcohol distillery, the Teatro Municipal Usina Gravatá is now one of Divinópolis' most prominent cultural landmarks. Named in honor of engineer Antônio Gonçalves Gravatá, who originally oversaw the construction of the distillery, the space was revitalized after years of abandonment and transformed into a vibrant theater.

The Usina Gravatá Theater is renowned for hosting a wide range of performances and events, including theater, dance, music, and lectures.

It's located just 4 minutes from the Catedral do Divino Espírito Santo, the theater operates daily from 8:00 AM to 10:00 PM, including weekends and holidays. With free admission, it serves as a versatile venue for both local and regional attractions, offering an accessible and enriching cultural experience for residents and visitors alike.



● **Museu Histórico de Divinópolis:**

Housed in the city's oldest mansion, the Museu Histórico de Divinópolis preserves the rich history and architectural heritage of the region. Built in 1830 by Capitão Domingos with the labor of about 200 enslaved workers, the "Sobrado do Largo da Matriz" has witnessed key moments in the city's development.

Located in Largo da Matriz, now Praça Dom Cristiano, the mansion has served many roles over time, including hosting elite authorities, lodging priests, functioning as a health clinic, school, and even hosting the city's first movie screenings. Restored to its historic colors, the building is now a designated heritage site and home to the Museu Histórico de Divinópolis, featuring preserved artifacts and exhibits.

Just 50 meters from the Catedral do Divino Espírito Santo, the museum is a free attraction open to visitors: Tuesday to Friday from 8:00 AM to 5:30 PM and Sunday from 9:00 AM to 1:00 PM.



6. Leopoldina

Leopoldina is a city in the Zona da Mata region of Minas Gerais, with a population of approximately 51,145 residents. Located about five and a half hours away from Belo Horizonte, the city hosts the third campus of CEFET-MG.

CEFET-MG - Campus III

Website: <https://www.leopoldina.cefetmg.br/>

E-mail: dc-lp@cefetmg.br

Instagram: @cefetleo

Phone number: +55 (32) 3449-2346

Address: Rua José Peres, 558 - Centro - Leopoldina - MG

Things To See And Do

● Cachoeira Poeira d'Água:

Cachoeira Poeira d'Água is one of the most famous and stunning waterfalls in the region of Leopoldina, part of the scenic Serras e Cachoeiras tourist circuit. Located just 46 minutes from downtown Leopoldina and 9 km from the nearby town of Piacatuba, it is easily accessible via a dirt road that winds through breathtaking landscapes.

For the more adventurous, the route can also be explored by bike or on foot through trails, offering a rewarding experience for those up for the challenge.

The waterfall features remarkable cascades that are especially striking during warmer seasons with higher water flow. When the water crashes onto the dark stones below, it creates a mist resembling a cloud of dust, which inspired its name. The contrast between the dark rocks and the sparkling foam of the falls makes it a visually captivating natural attraction.

Perfect for cooling off on hot days, Cachoeira Poeira d'Água offers a serene setting for picnics, birdwatching, and nature walks. Visitors are encouraged to preserve its beauty by leaving no waste behind.



● **Catedral de São Sebastião:**

Located in Dom Helvécio Square, the Catedral de São Sebastião is a prominent Catholic church in Leopoldina and the episcopal seat of the Diocese of Leopoldina. Originally established as a parish in 1854, the cathedral stands as a testament to the city's rich religious history.

The current structure, designed in the Romanesque style with a Latin cross layout, features a 50-meter tower, a grand dome over the transept, and intricate stained-glass windows comprising 65 panels with 482 religious illustrations. Its impressive façade includes twin rose windows and a staircase of 140 steps leading to the main entrance.

Inaugurated as a cathedral in 1942, though only completed in 1965, it replaced the original 19th-century church. A statue of Our Lady of Peace, commemorating the end of World War II, now marks the site of the former parish. The cathedral remains a key landmark for spiritual and architectural exploration in Leopoldina.



● Casa de Leitura Lya Maria Müller Botelho

Inaugurated in 2009, the Casa de Leitura Lya Maria Müller Botelho is a beautiful mansion located in the heart of Leopoldina, Minas Gerais. Its architecture, inspired by the house from the 1939 film *Gone with the Wind*, gives the space a timeless, elegant appeal.

The house serves as a vibrant cultural center, hosting a variety of activities such as art workshops, book launches, art exhibitions, poetry readings, storytelling sessions, and other artistic performances. The expansive garden offers a perfect setting for these events, further enhancing the cultural experience.

Additionally, the Casa de Leitura features the Memorial Ormeo Junqueira Botelho, a tribute to the patron of the Ormeo Junqueira Botelho Foundation, which supports the arts and culture in the region. The house is not only a place for literary and artistic engagement but also a significant historical and cultural landmark in Leopoldina. It's open Tuesday to Saturday, from 8:00 AM to 11:30 AM and 1:00 PM to 5:30 PM.



● **Museu Espaço dos Anjos:**

The Museu Espaço dos Anjos, located in the house where Symbolist poet Augusto dos Anjos spent his final years, is a cultural and literary landmark in Leopoldina, Minas Gerais. Established in 1993, the museum preserves and promotes the poet's life and work, with the house restored to maintain its original features, offering an intimate connection to his literary legacy.

The museum showcases a permanent collection of personal items, manuscripts, letters, and documents, and hosts temporary exhibitions and cultural events such as lectures, book launches, and poetry readings. The annual Concurso Nacional de Poesia Augusto dos Anjos is a key event, attracting poets from all over Brazil.

The colonial-style mansion is a notable attraction, providing a rich cultural experience for literature enthusiasts and those interested in local history. The museum is open from 9 AM to 6 PM Tuesday to Friday, and 9 AM to 1 PM on Saturdays, closed on Sundays and Mondays.



7. Nepomuceno

Nepomuceno is located in the southern part of Minas Gerais, with a population of around 26,000 inhabitants. Situated approximately three and a half hours away from Belo Horizonte, the city is home to the ninth campus of CEFET-MG.

CEFET-MG - Campus IX

Website: <https://www.nepomuceno.cefetmg.br/>

E-mail: nepomuceno@cefetmg.br

Instagram: @cefetnepomuceno

Phone number: +55 (35) 3861-5700

Address: Av. Monsenhor Luiz de Gonzaga, 103 - Centro - Nepomuceno - MG

Things To See And Do

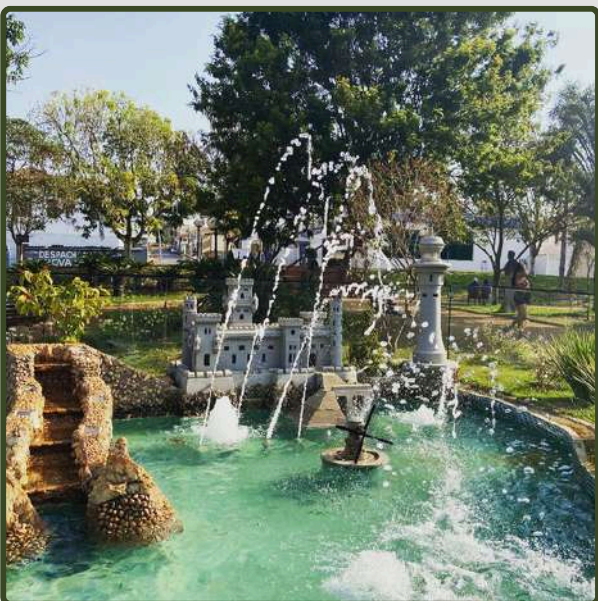
● **Praça Padre José :**

Located in the heart of Nepomuceno, Minas Gerais, the Praça Padre José is a cultural landmark, recognized for its historical significance and charm. Officially listed as a protected site by the Municipal Government, the square reflects the city's cultural heritage and serves as a gathering place for residents and visitors alike.

A standout feature of the square is the Castelinho, a striking replica of a castle. This structure draws visitors from neighboring cities, offering a glimpse into the town's history and architectural creativity. The Castelinho has been officially preserved as part of the city's cultural heritage.

In addition, the square is where the Igreja Matriz is located, a beautiful church whose construction began in 1815. This historic church shows Nepomuceno's deep-rooted religious traditions and architectural legacy.

Whether you're admiring the Castelinho, the historic church or just enjoying the tranquil atmosphere of the square, Praça Padre José offers a great place for resting and exploring some local culture.



8. Timóteo

Timóteo is situated in the eastern region of Minas Gerais, with a population of approximately 90,568 residents. The city, located about four hours away from Belo Horizonte, hosts the seventh campus of CEFET-MG.

CEFET-MG - Campus VII

Website: <https://www.timoteo.cefetmg.br/>

E-mail: dc-tm@cefetmg.br

Instagram: @cefetmg.timoteo

Phone number: +55 (31) 3845-4600

Address: Rua 19 de Novembro, 121 – Centro Norte - Timóteo - MG

Things To See And Do

● **Fundação Aperam Acesita:**

Established in 1994, the Aperam Acesita Foundation is a private, non-profit organization committed to promoting the sustainable development of communities where Aperam South America operates. Active in the Vale do Aço region, especially Timóteo, and the Vale do Jequitinhonha, it partners

with public agencies and national and international institutions to achieve its mission through in-house programs, sponsored projects, and initiatives that empower individuals and society.

Focusing on Education, Culture, Environment, and Social Development, the foundation integrates these areas with complementary approaches. Its headquarters, a neoclassical building from the 1950s, once served as housing for workers and retains its historical charm.

The facility includes an administrative area, a woodland, and a cultural center featuring a museum, exhibition spaces, an event venue, and a theater hosting various performances.



● **Praça do Coliseu:**

Located in the heart of Timóteo, Coliseu Square is a vibrant and inviting space designed for leisure, sports, and cultural activities. Its unique circular architecture, reminiscent of a coliseum, creates a welcoming environment for visitors of all ages.

Coliseu Square features a variety of amenities, including a playground for children, an outdoor gym and a skate park.

In addition to its recreational facilities, the square is equipped with free Wi-Fi access. It also serves as a hub for cultural events and community gatherings, hosting activities that bring residents together to celebrate the city's vibrant culture and active lifestyle.

Coliseu Square is a great public space where Timóteo's community comes to relax, socialize, and engage in sports and cultural events.



9. Varginha

Varginha is a city in the southern part of Minas Gerais, with a population of about 136,602 inhabitants. Approximately four hours away from Belo Horizonte, the city is home to the eighth campus of CEFET-MG.

CEFET-MG - Campus VIII

Website: <https://www.varginha.cefetmg.br/>

E-mail: dc-vg@cefetmg.br

Instagram: @cefetmgvarginha

Phone number: +55 (35) 3690-4200

Address: Av. dos Imigrantes, 1000 - Bairro Vargem - Varginha - MG

Things To See And Do

● **Theatro Capitólio:**

Located in the heart of Varginha, Theatro Capitólio is a historic and cultural icon. Conceived by industrialist José Navarra and completed in an eclectic architectural style, the theater was built by Antônio and Celestino Pires, with its refined design attributed to the Italian decorator Alexandre Valatti.

Opened on 1927, the theater quickly became a social and cultural hub for the city.

It's grand inauguration included the National Anthem, performed by the theater's orchestra under the direction of Maestro Ricciotti Volpe, followed by a two-part program. It's featured the film Cabaret by Paramount Pictures, and showcased live performances by the acclaimed "Esperança Diez" trio from Rio de Janeiro.

Over time, the theater's presence transformed the surrounding streets into vibrant social areas, fostering establishments like the Clube de Varginha and Sociedade Italiana, along with cafés and bars that became central to the city's social life.

Today, Theatro Capitólio remains a cherished cultural space, admired for its architectural beauty and historical significance, and continues to host artistic performances.



● **Memorial do ET e Planetário:**

The Memorial do ET commemorates the city's famous 1996 UFO incident. Dedicated to the alleged alien sightings that captured international attention, the space offers a mix of history, culture, and entertainment. Visitors can explore exhibitions by local artists, a cinema showcasing documentaries on ufology, and an array of items related to the event, including newspaper clippings, witness statements, and documents from the time.

The highlight of the memorial is a life-sized replica of the alien that has become a symbol of Varginha, alongside a depiction of the spacecraft reportedly seen by locals. The memorial has since become a significant tourist attraction, drawing visitors from across the country curious about this intriguing chapter in Brazilian ufology.

The site is open Tuesday to Sunday and on holidays, from 9 a.m. to 7 p.m. The adjacent planetarium offers themed video screenings, with specific times depending on the day.



● **Parque Zoobotânico Dr. Mário Frota:**

The Dr. Mário Frota Zoobotanical Park, located in Varginha, is a popular destination for nature and wildlife enthusiasts. Open daily from 9 a.m. to 4 p.m., it offers an affordable entry fee of R\$6.00 (full price) and R\$3.00 (half price for students and seniors aged 60+). Visitors can enjoy this expansive, tree-filled space, which features trails, lakes, and a restored locomotive that adds a nostalgic charm to the environment.

Home to approximately 400 animals, the park showcases a variety of species, including jaguars, ocelots, as well as emus, macaws, parrots, ostriches, lions, bush dogs, alligators, and more. The park is a favored spot for group visits, school excursions, and nature lovers, providing both educational and recreational experiences in a serene, green setting.





**Secretaria de Relações
Internacionais**